



Air Quality Strategy & Action Plan

Technical Appendices

March 2017

Content of Appendices

Content of Appendices	2
Appendix 1 – National Air Quality Objectives	3
Appendix 2 – Health Impacts of Air Pollution	5
Appendix 3 – Air Monitoring & Modelling Results	7
Appendix 4 – Emission Sources	20
Appendix 5 - Glossary	24

Appendix 1 – National Air Quality Objectives

The air quality objectives applicable to the London are set out in the Air Quality (England) Regulations 2000 (SI 928), The Air Quality (England) (Amendment) Regulations 2002 (SI 3043), and are shown in Table 1. This table shows the objectives in units of micrograms per cubic metre $\mu\text{g.m}^{-3}$ (milligrams per cubic metre, mg.m^{-3} for carbon monoxide) with the number of exceedences in each year that are permitted (where applicable).

Table 1 Air Quality Objectives included in Regulations for the purpose of London Local Air Quality Management in London

Pollutant	Air Quality Objective		Date to be achieved by
	Concentration	Measured as	
Benzene	16.25 $\mu\text{g.m}^{-3}$	Running annual mean	31.12.2003
	5.00 $\mu\text{g.m}^{-3}$	Annual mean	31.12.2010
1,3-Butadiene	2.25 $\mu\text{g.m}^{-3}$	Running annual mean	31.12.2003
Carbon monoxide	10 mg.m^{-3}	Running 8-hour mean	31.12.2003
Lead	0.50 $\mu\text{g.m}^{-3}$	Annual mean	31.12.2004
	0.25 $\mu\text{g.m}^{-3}$	Annual mean	31.12.2008
Nitrogen dioxide	200 $\mu\text{g.m}^{-3}$ not to be exceeded more than 18 times a year	1-hour mean	31.12.2005
	40 $\mu\text{g.m}^{-3}$	Annual mean	31.12.2005
Particulate Matter (PM ₁₀) (gravimetric)	50 $\mu\text{g.m}^{-3}$, not to be exceeded more than 35 times a year	24-hour mean	31.12.2004
	40 $\mu\text{g.m}^{-3}$	Annual mean	31.12.2004
Sulphur dioxide	350 $\mu\text{g.m}^{-3}$, not to be exceeded more than 24 times a year	1-hour mean	31.12.2004
	125 $\mu\text{g.m}^{-3}$, not to be exceeded more than 3 times a year	24-hour mean	31.12.2004
	266 $\mu\text{g.m}^{-3}$, not to be exceeded more than 35 times a year	15-minute mean	31.12.2005

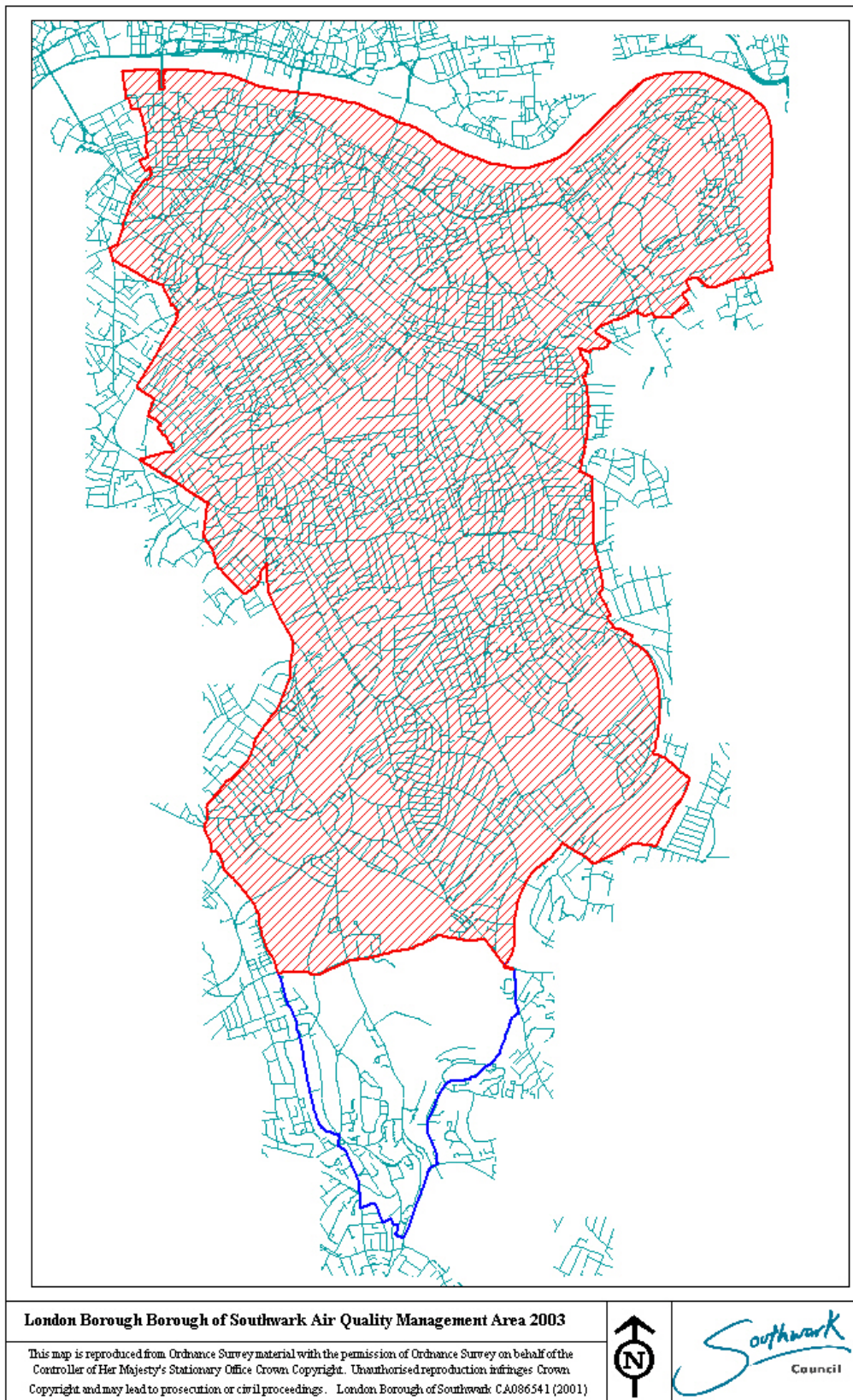


Figure 1

Map of Air Quality Management Area in the L.B. Southwark

Appendix 2 – Health Impacts of Air Pollution

Introduction

The health impacts of air pollution are varied, ranging from coughing, worsening of asthma, changes in lung function, increased hospital admissions for respiratory and cardiovascular disease and death.

Meta-analysis of several studies provides the evidence of a statistically significant effect. This meta-analysis also provides an estimate of the magnitude of the effect. The results are usually expressed as a proportional increase in effects for a $10\mu\text{g.m}^{-3}$ change in exposure. For an example, the overall increase in all-cause deaths from an increase in exposure to $\text{PM}_{2.5}$ is 6% per $10\mu\text{g.m}^{-3}$ change in the annual mean concentration.

In March 2015 the Committee on the Medical Effects of Air Pollutants concluded there is evidence of associations of ambient concentrations of NO_2 with a range of effects on health. Studies have shown that to some extent, NO_2 acts as a marker of the effects of other traffic-related pollutants. The epidemiological and mechanistic evidence now suggests that it would be sensible to regard NO_2 as causing some of the health impact found to be associated with it in epidemiological studies.

In July 2015 King's College London calculated that the total mortality burden of long-term exposure to NO_2 is estimated to be up to 88,113 life-years lost, equivalent to 5,879 deaths at typical ages (assuming the WHO value of up to a 30% overlap between the effects of $\text{PM}_{2.5}$ and NO_2). Some of this effect may be due to other traffic pollutants. The total mortality burden of anthropogenic $\text{PM}_{2.5}$ for the year 2010 is estimated to be 52,630 life-years lost, equivalent to 3,537 deaths at typical ages. The total mortality burden in 2010 from $\text{PM}_{2.5}$ and NO_2 can be added to give a range from the 52,630 life-years lost, equivalent to 3,537 deaths at typical ages from $\text{PM}_{2.5}$ alone (if only including the most established effects) to as much as 140,743 life-years lost, equivalent to 9,416 deaths at typical ages (assuming a 30% overlap between the effects of $\text{PM}_{2.5}$ and NO_2 and comparing with a zero concentration of NO_2).

A study in East London¹ found that traffic-related air pollutants have adverse effects on respiratory and allergic symptoms in school children in the area. This study also demonstrated that was a reduction of lung Forced Vital Capacity with increased exposure to traffic derived pollutants.

¹ Wood HE, Marlin N, Mudway IS, Bremner SA, Cross L, Dundas I, et al. (2015) Effects of air pollution and the introduction of the Low Emission Zone on prevalence of respiratory and allergic symptoms in schoolchildren in east London: A Sequential Cross – Sectional Study. Plos One 10(8): e0109121. Doi 10.1371/journal.pone.0109121

The table below shows the summary of the sources and impact of pollutants found in an urban area.

Pollutant	Sources	Health effects
Nitrogen dioxide	Road transport (especially diesel vehicles), domestic boilers, power stations and industry	Lung irritation and damage
Sulphur dioxide	Power stations, domestic boilers, industry	Coughing, irritation and narrowing of airways. Can make asthma and bronchitis worse
Fine Particulates (PM ₁₀ and PM _{2.5})	Road transport (mainly diesel vehicles and tyre and break wears), power stations, domestic boilers	Increased chances of respiratory disease, lung damage, cancer and premature death
Ozone	Produced when sunlight reacts with vehicle exhaust fumes	Irritation to eyes, nose and throat. Can damage lungs and airways

Appendix 3 – Air Monitoring & Modelling Results

Introduction

This section presents the historical and up to date data from the continuous monitoring stations within the Southwark area for Nitrogen Dioxide (NO₂) and Particulate matter (PM₁₀). The Authority does not present monitor for PM_{2.5} so the average data for all of the London sites has been presented.

After the monitoring data section, there are the modelling annual means for NO₂, PM₁₀ & PM_{2.5} concentrations for the Greater London Area in 2013 maps. The following maps show the modelled annual mean concentrations for 2013 for the Borough.

The final part of this appendix outlines the GLA focus areas in the Greater London and in the Southwark and the areas which are on the border of the borough.

Nitrogen Dioxide (NO₂)

Site ID	Site type	Valid data capture for monitoring period % ^a	Valid data capture 2015 % ^b	Annual Mean Concentration (µg.m ⁻³)						
				2009	2010	2011	2012	2013	2014	2015
SWK1 ²	Urban Background	N / A	N / A	49 (44%)	N / A	N / A	N / A	N / A	N / A	N / A
SWK5	Roadside	69	69	N / A	N / A	46 (73%)	52 (80%)	55 (>90%)	38 (32%)	42 (69%)
SWK6	Urban Background	80	80	N / A	N / A	N / A	N / A	42 (85%)	37 (84%)	41(80%)
CP1 ³	Roadside	N / A	N / A	49 (93%)	47 (56%)	N / A	N / A	N / A	N / A	N / A

Table 2 Annual Mean NO₂ Ratified and Bias-adjusted Monitoring Results (µg.m⁻³)

Notes: Exceedence of the NO₂ annual mean AQO of 40µg.m⁻³ are shown in **bold**.

NO₂ annual means in excess of 60µg m⁻³, indicating a potential exceedence of the NO₂ hourly mean AQS objective are shown in bold and underlined.

The above data shows that at both stations, that the annual mean concentrations is exceeding the objective of 40µg.m⁻³ since 2011. The trends for the monitoring stations in the Southwark area can be seen in Figure 2 below.

² This air quality monitoring station was situated at Larcom Street, the station closed in June 2009, due to the council building being disposed of.

³ This air quality monitoring station was installed by a collaboration of Local Authorities (L.B. Bromley, L.B. Croydon L.B. Lambeth, L.B. Lewisham and L.B. Southwark). This station was closed in July 2010 due to the reduction/reallocation of resources by the involved Local Authorities.

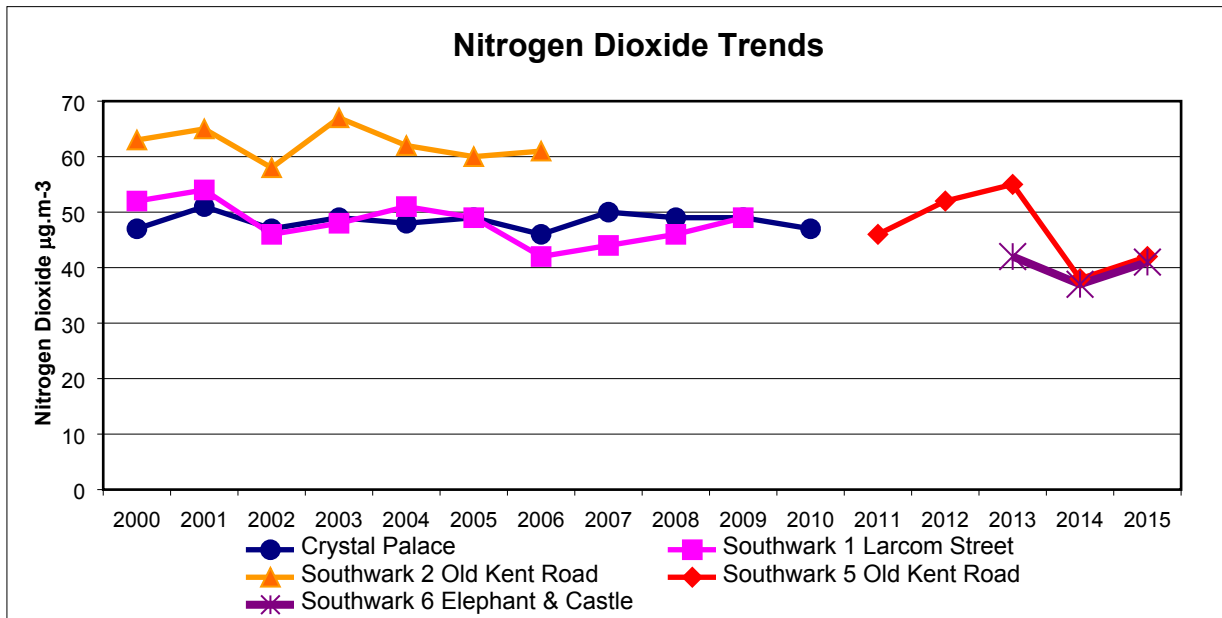


Figure 2 Trends in Annual Mean NO₂ Concentrations at the Borough’s Automatic Monitoring Sites

Figure 3 below shows the mean results from all roadside and background monitoring stations within the London Air Quality Network⁴. This shows that the trend for the background sites is showing a gradual reduction to below the objective. However the roadside locations are not reducing and exceed the objective in the region of 7µg.m⁻³ to 20µg.m⁻³.

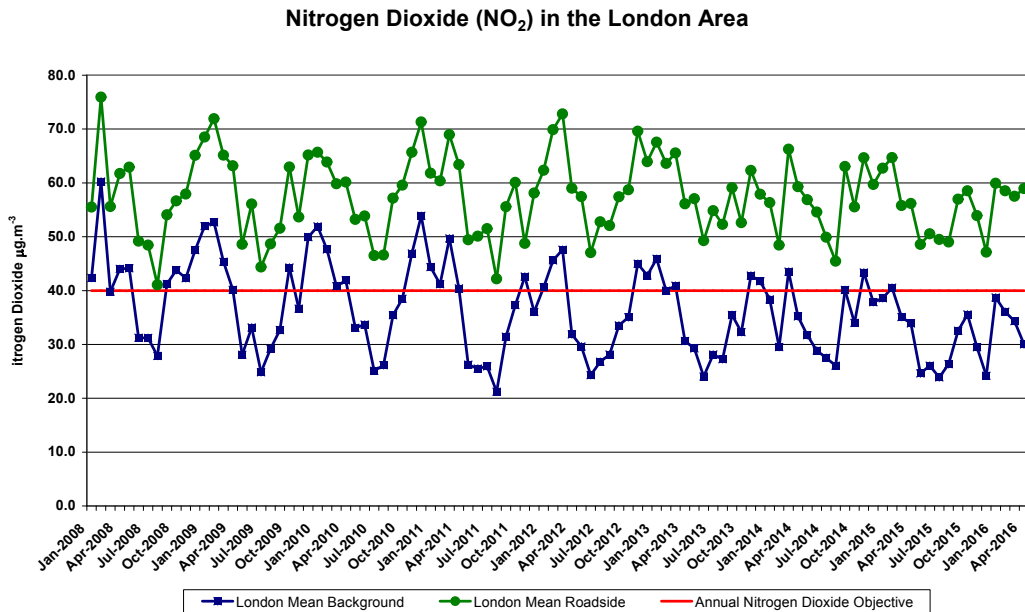


Figure 3 Trends of the monthly mean Nitrogen Dioxide concentrations at roadside and background sites in the London area

⁴ London Datastore - London Average Air Quality Levels accessed at <http://data.london.gov.uk/dataset/london-average-air-quality-levels>

Table 3 Annual Mean PM₁₀ Automatic Monitoring Results (µg m⁻³)

Site ID	Valid data capture for monitoring period %	Valid data capture 2015 %	Annual Mean Concentration (µg.m ⁻³)						
			2009	2010	2011	2012	2013	2014	2015
SWK1	N / A	N / A	22 (44%)	N / A	N / A	N / A	N / A	N / A	N / A
SWK5	60	60	N / A	29 (8%)	27 (80%)	25 (82%)	30 (85%)	23	21
SWK6	77	77	N / A	N / A	N / A	N / A	23 (80%)	19	20
CP1	N / A	N / A	24(80%)	23 (55%)	N / A	N / A	N / A	N / A	N / A

Notes: Exceedence of the PM₁₀ annual mean AQO of 40µg m⁻³ are shown in **bold**.

The PM₁₀ annual mean concentrations at the monitoring stations have met the national air quality objectives. The downward trends of the PM₁₀ annual mean concentrations at the monitoring stations is shown in Figure 4 The trends for all the London Air Quality Network roadside and background monitoring stations can be seen in Figure 5 this shows that the concentrations are generally below the objective level.

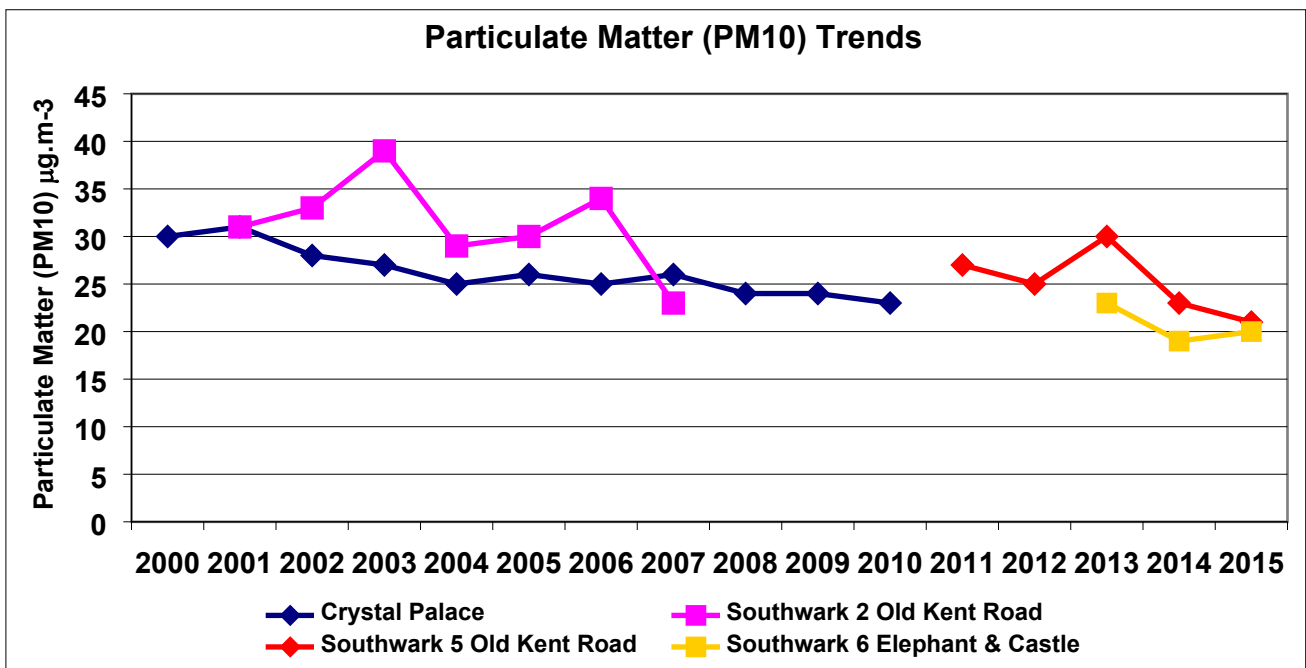


Figure 4 Trends in Annual Mean PM₁₀ Concentrations of the Authority’s PM₁₀ monitoring stations

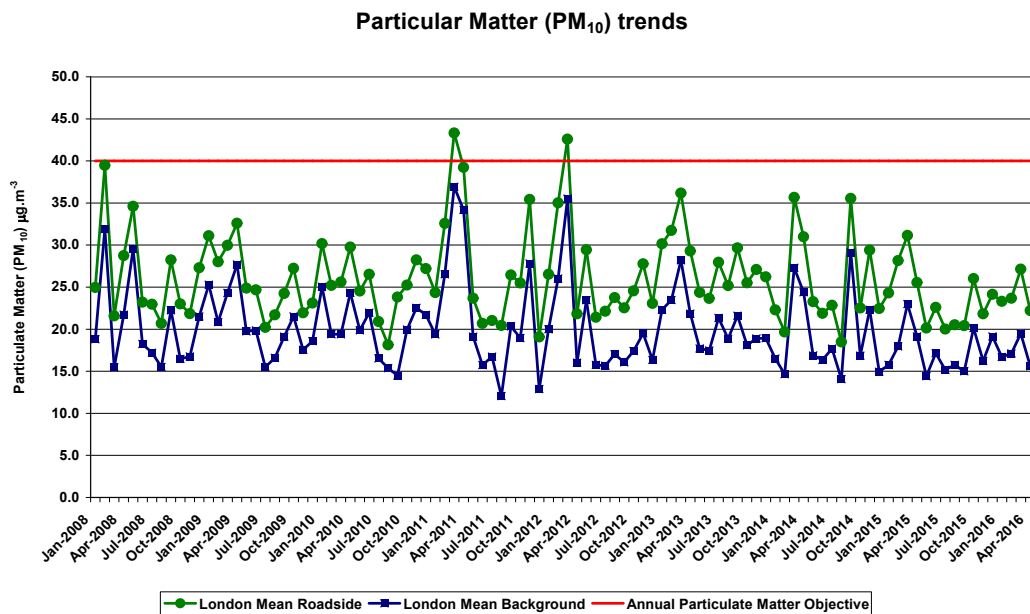


Figure 5 Trends of the monthly mean Particulate Matter (PM10) concentrations at roadside and background sites in the London area.

Particulate Matter (PM_{2.5})

The London Borough of Southwark does not monitor for PM_{2.5} in the Borough. Figure 6 shows the concentrations of all the PM_{2.5} roadside and background monitors in the London Air Quality Network. There appears to be a downward trend of the concentrations.

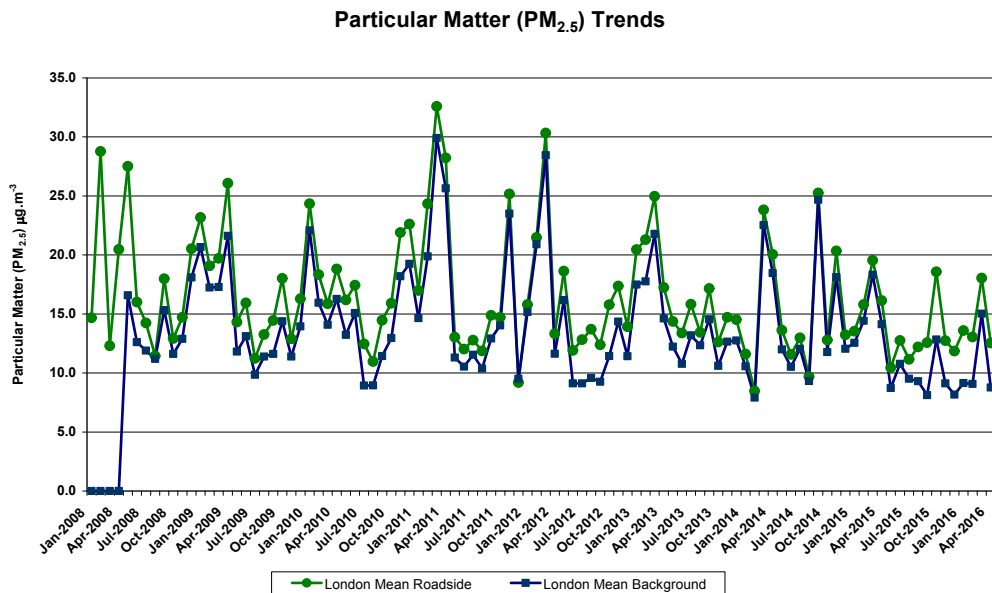


Figure 6 Trends of the monthly mean Particulate Matter (PM_{2.5}) concentrations at roadside and background sites in the London area.

Source GLA accessed at <http://data.london.gov.uk/dataset/london-average-air-quality-levels>

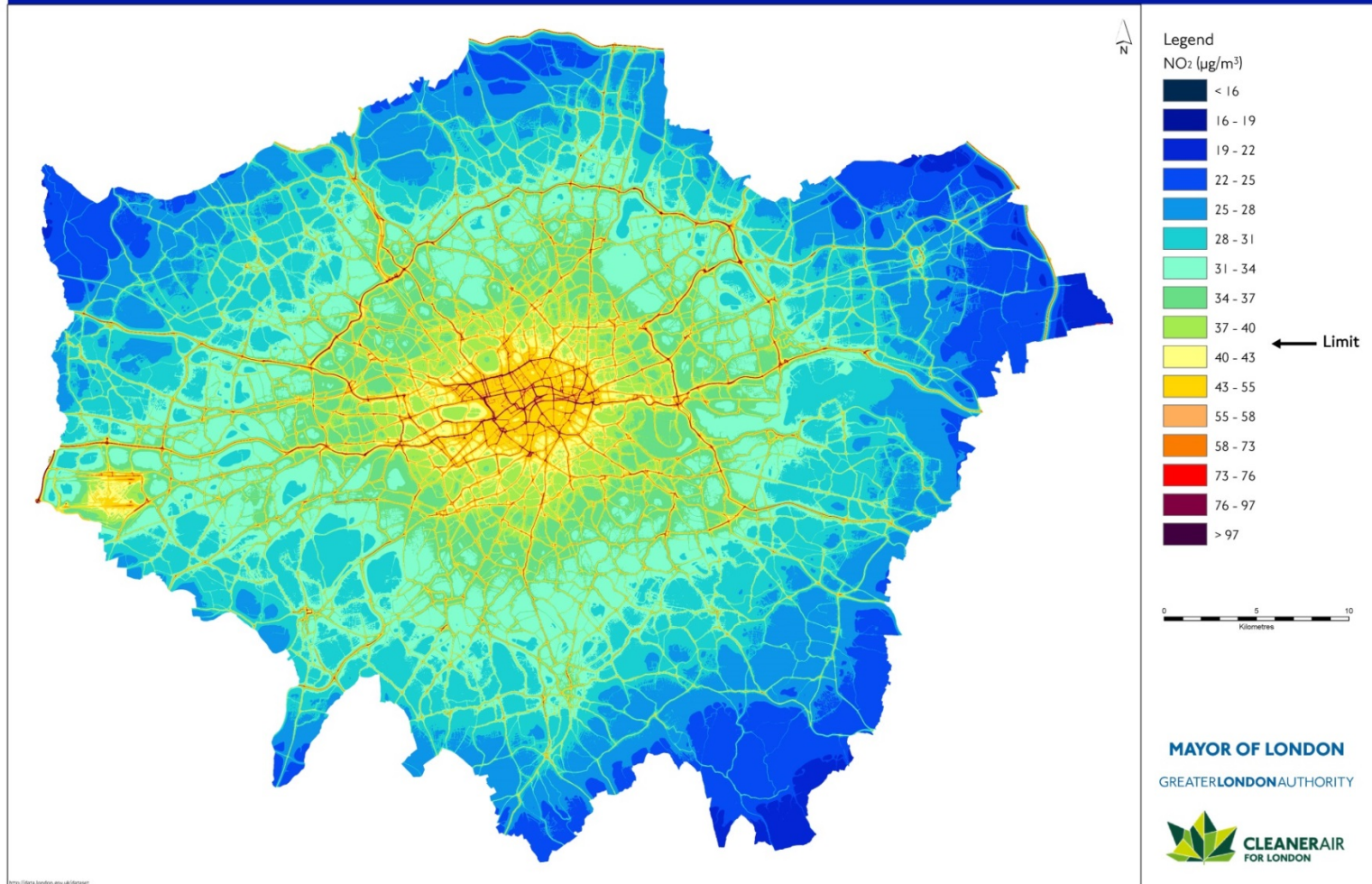


Figure 7 Greater London – Annual Mean NO₂ concentrations 2013

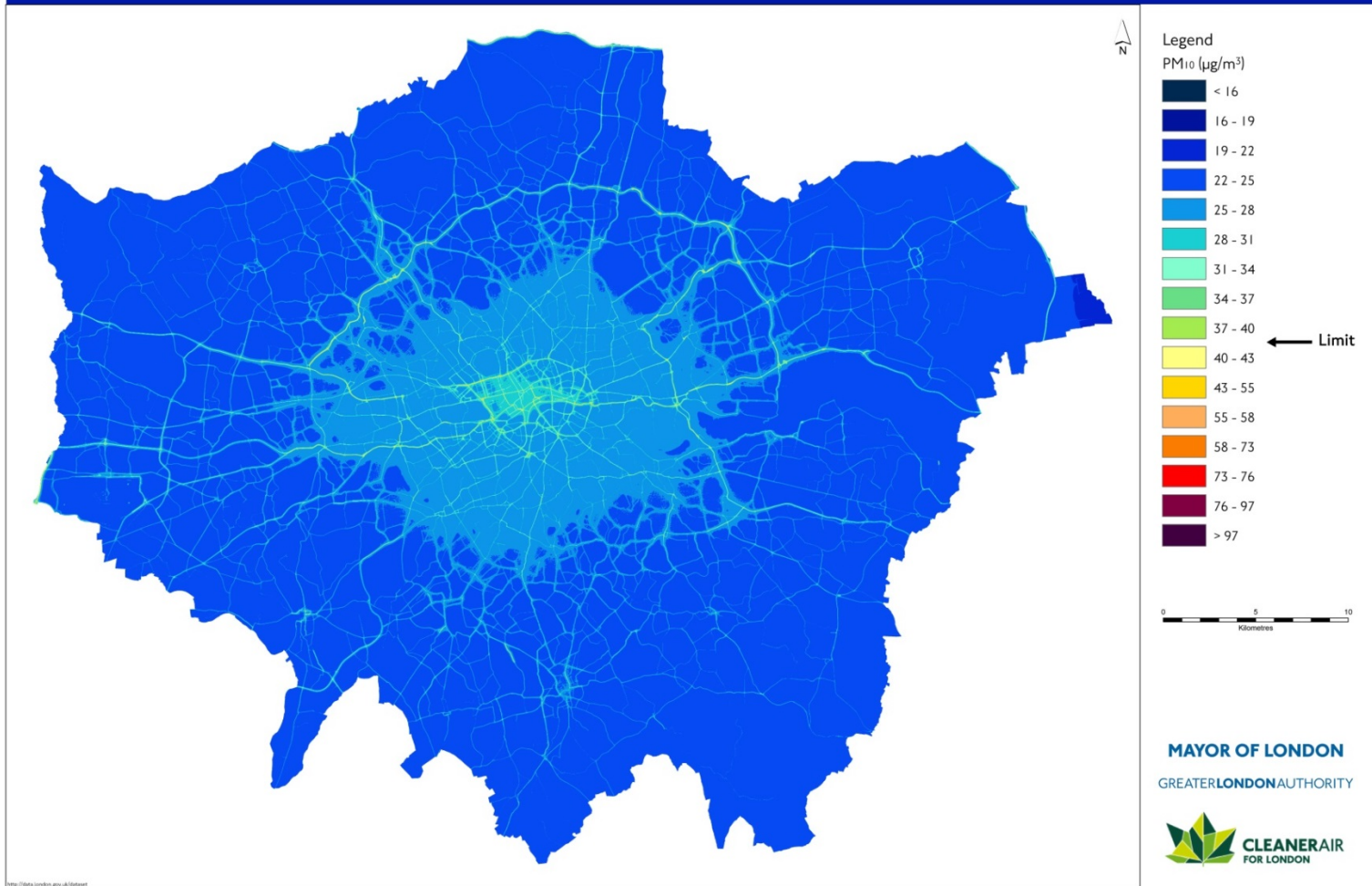


Figure 8 Greater London – Annual Mean PM₁₀ concentrations 2013

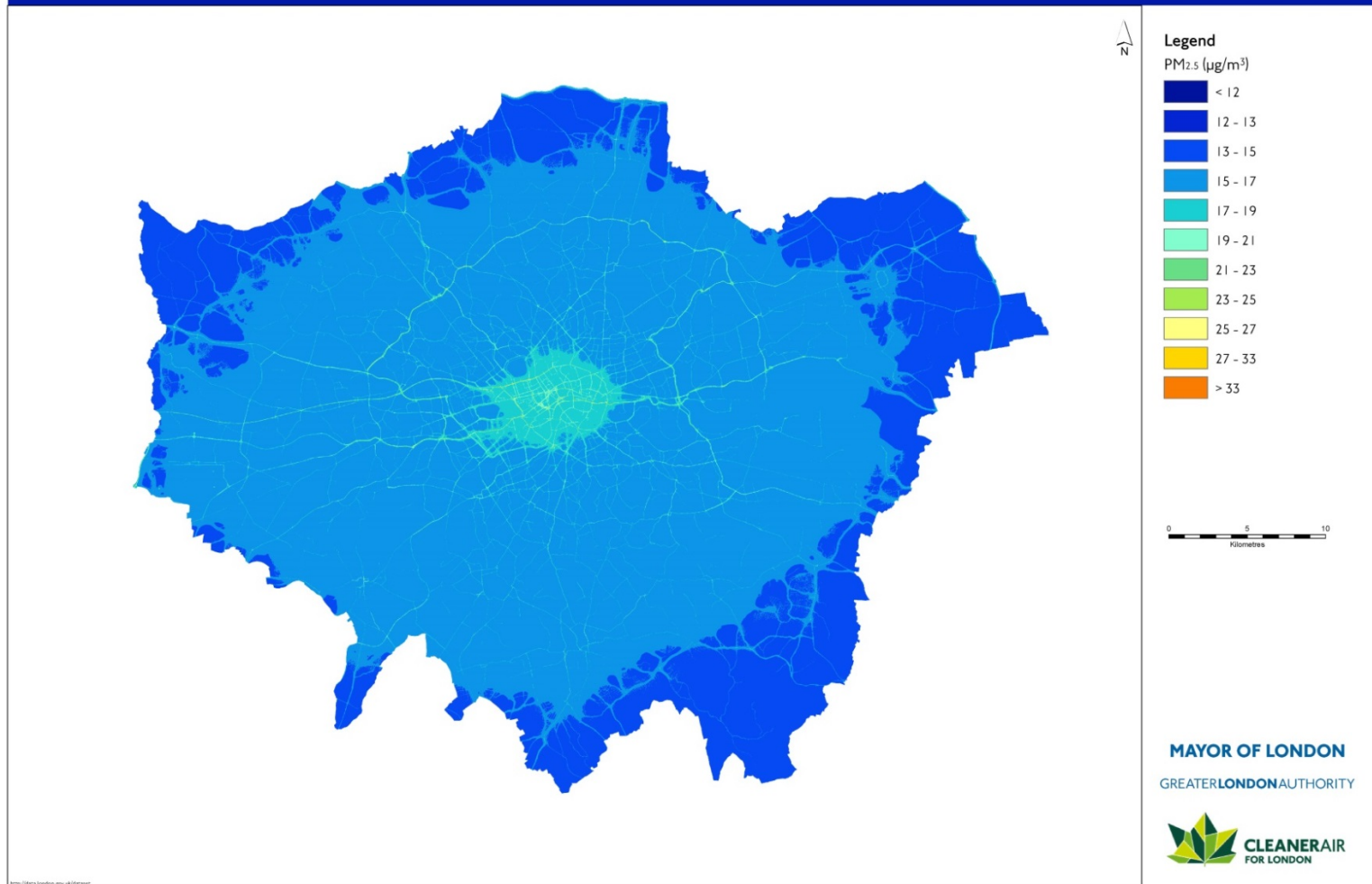


Figure 9 Greater London – Annual Mean PM_{2.5} concentrations 2013

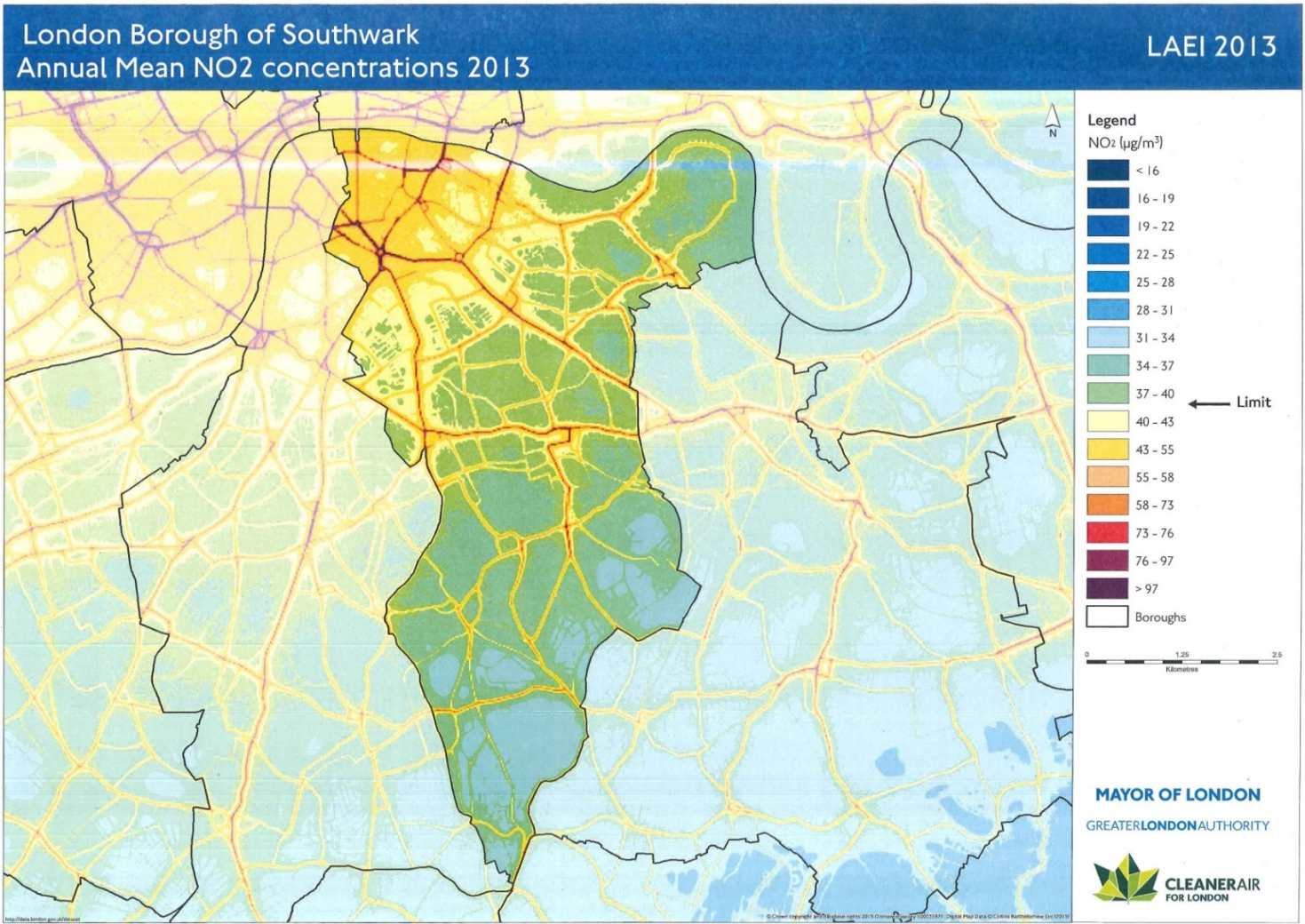


Figure 10 L.B. Southwark– Annual Mean NO₂ concentrations 2013

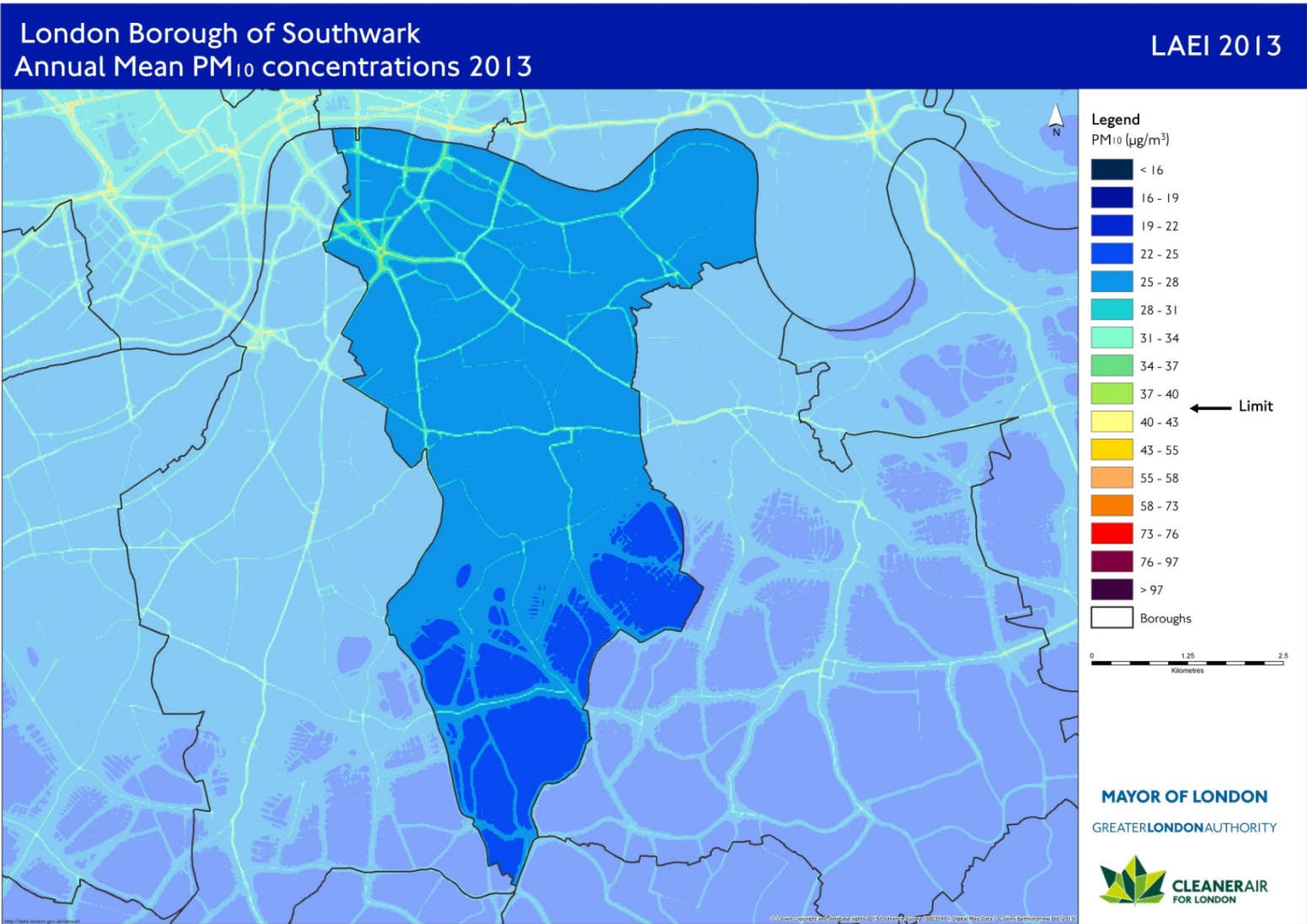


Figure 11 L.B. Southwark– Annual Mean PM₁₀ concentrations 2013

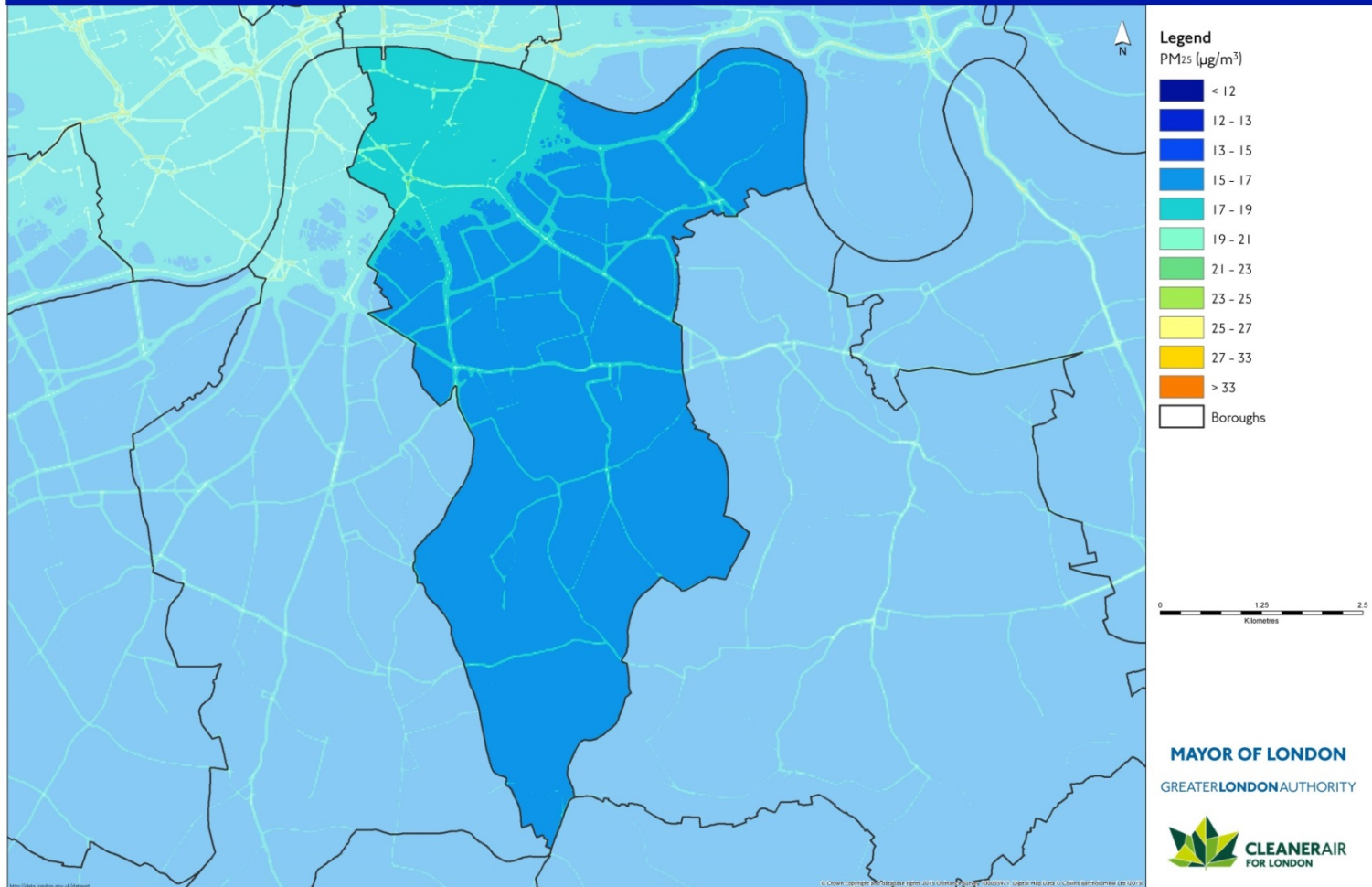
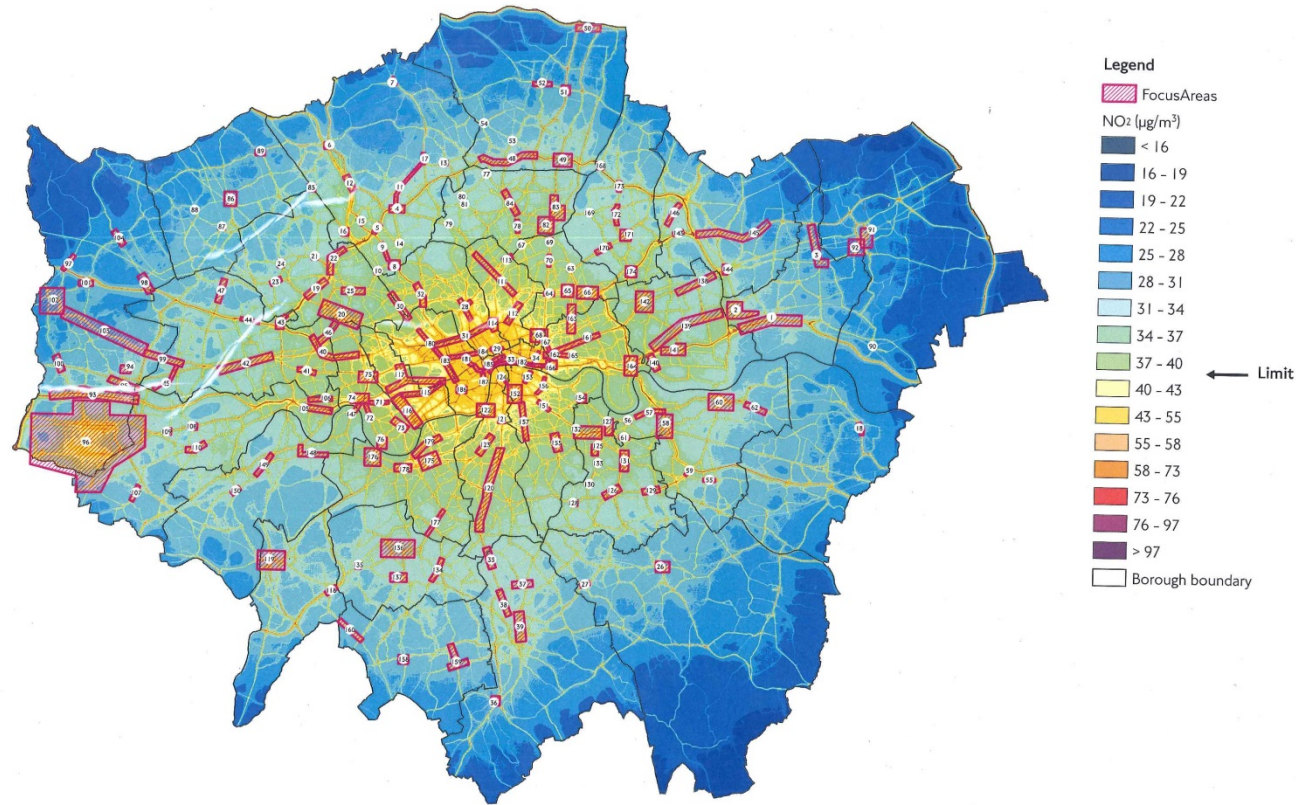


Figure 12 L.B. Southwark– Annual Mean PM_{2.5} concentrations 2013

NO₂ Focus Areas LAEI 2013



London Atmospheric Emissions Inventory (2013)

Figure 13 NO₂ Focus Areas LAEI 2013

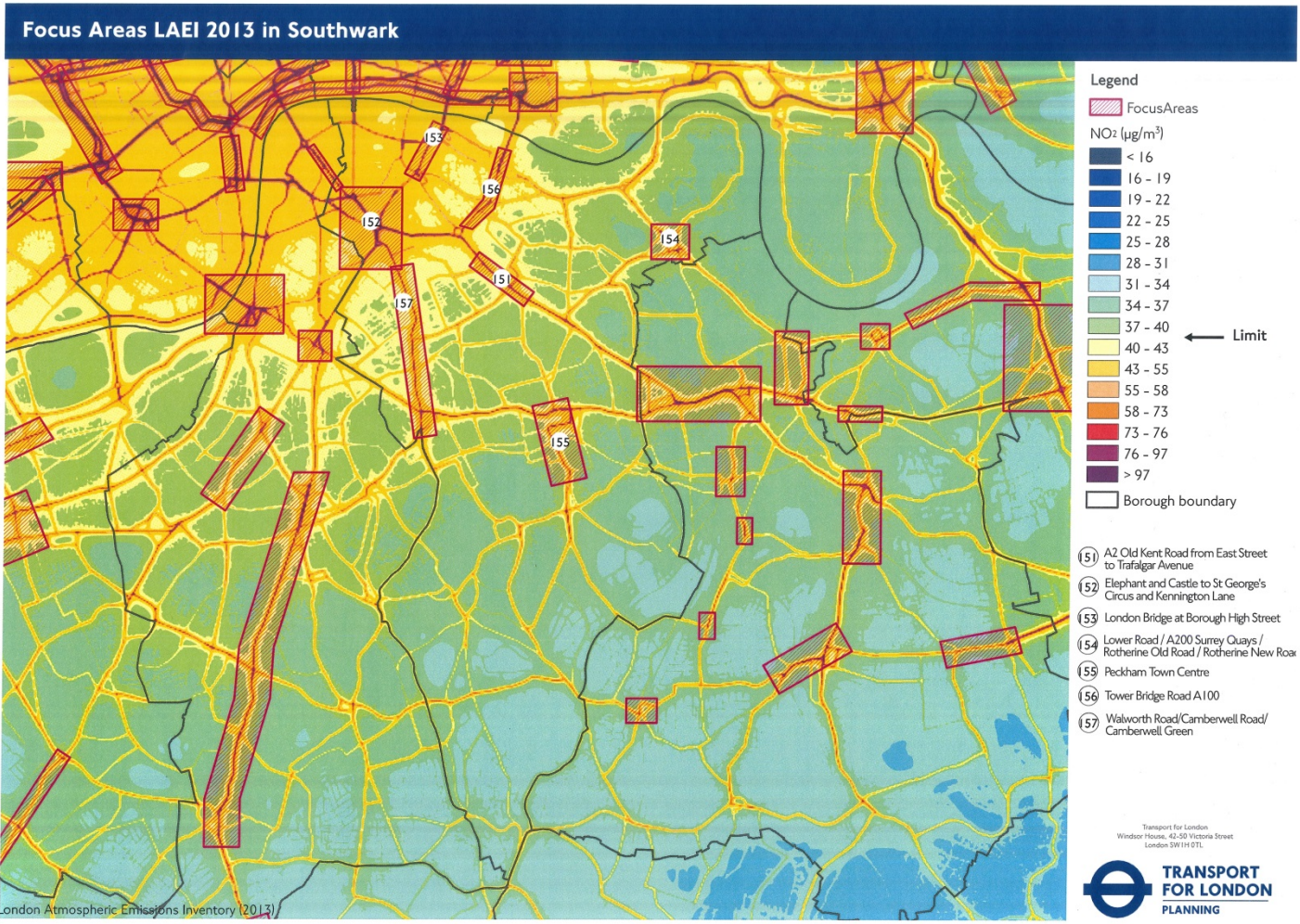


Figure 14 NO₂ Focus Areas LAEI 2013 in Southwark

Air Quality Focus Areas for the Greater London Area.

The London Mayor has introduced a number of Air Quality Focus Areas⁵ in the Greater London area. Figure 13 shows the Air Quality Focus Areas for the Greater London Area. Figure 14 shows the Air Quality Focus Areas in the Borough and neighbouring Boroughs. The process of how the Mayor of London developed these focus areas can be found [here](#)

Table 4 and Table 5 give descriptions of the air quality focus areas in the borough and the air quality focus areas adjacent to borough's Boundary. Within the borough the following areas have been designated Air Quality Focus Areas by the GLA.

Each of the Air Quality Focus Areas in Southwark has a dedicated action to improve air quality in the revised action plan, see actions 7.2 to 7.12.

Table 4 Air Quality Focus Areas in the London Borough of Southwark

ID	Description of the Air Quality Focus Area
151	A2 Old Kent Road from East Street to Trafalgar Avenue
152	Elephant and Castle to St George's Circus and Kennington Lane
153	London Bridge at Borough High Street
154	Lower Road / A200 Surrey Quays/ Rotherhithe Old Road / Rotherhithe New Road
155	Peckham Town Centre
156	Tower Bridge Road A100
157	Walworth Road / Camberwell Road / Camberwell Green

Table 5 Air Quality Focus Areas in the adjacent boroughs

ID	Local Authority	Description of the Air Quality Focus Area
33	City of London	Farringdon Road and New Bridge Street at Blackfriars
34	City of London	Monument / Gracechurch Street / Bishopsgate to
121	Lambeth	Kennington Oval and Camberwell New Road
124	Lambeth	Waterloo Road
125	Lewisham	Brockley Cross
128	Lewisham	Forest Hill and Perry Vale Junction
130	Lewisham	Honor Oak Park junction Brockley Road
132	Lewisham	New Cross Gate and New Cross
133	Lewisham	Brockley Road (A218) between Adelaide Road and Wickham Road
166	Tower Hamlets	Tower Hill / Tower Gateway / Cable St / The Highway
182	City of Westminster	Embankment Charing Cross to Tower Hill

⁵ GLA (2013) Air Quality Focus Areas data accessed at <http://data.london.gov.uk/dataset/air-quality-focus-areas>

Appendix 4 – Emission Sources

Introduction

The GLA has produced the London Atmosphere Emissions Inventory (LAEI) for over a decade, the latest version was published in March 2016. The LAEI 2013 provides estimates in the Greater London area emissions for NO₂, PM₁₀, PM_{2.5} & CO₂ for the base year 2013 and forward projections for 2020, 2025 and 2030.

The LAEI can be downloaded from the [GLA Datastore](#). The LAEI 2013 provides the following data.

- Supporting Information
- Grid Emissions Summary (in Excel, MapInfo and Arc GISformat)
- Detailed Road Transport (in Excel, MapInfo and Arc GISformat)
- Modelled Concentrations for the three pollutants for all the years.
- Presentations Slides of the GLA LAEI 2013 Workshop on 14/04/2016.

With the LAEI 2013 data, the GLA has provided [bespoke Borough by Borough information](#) which utilises the information contained in the LAEI 2013. The information provides the concentration maps for 2013 and 2020 for NO₂, PM₁₀ & PM_{2.5} for all the London Boroughs and Excel Tools. The [Excel Tools](#) included a Source Apportionment Tool, the following pie charts show the source apportionment for NO_x, PM₁₀ & PM_{2.5} emissions in 2013 for the London Borough of Southwark. Within the source apportionment tool, the emissions can be calculated for each 1km grid square within the borough.

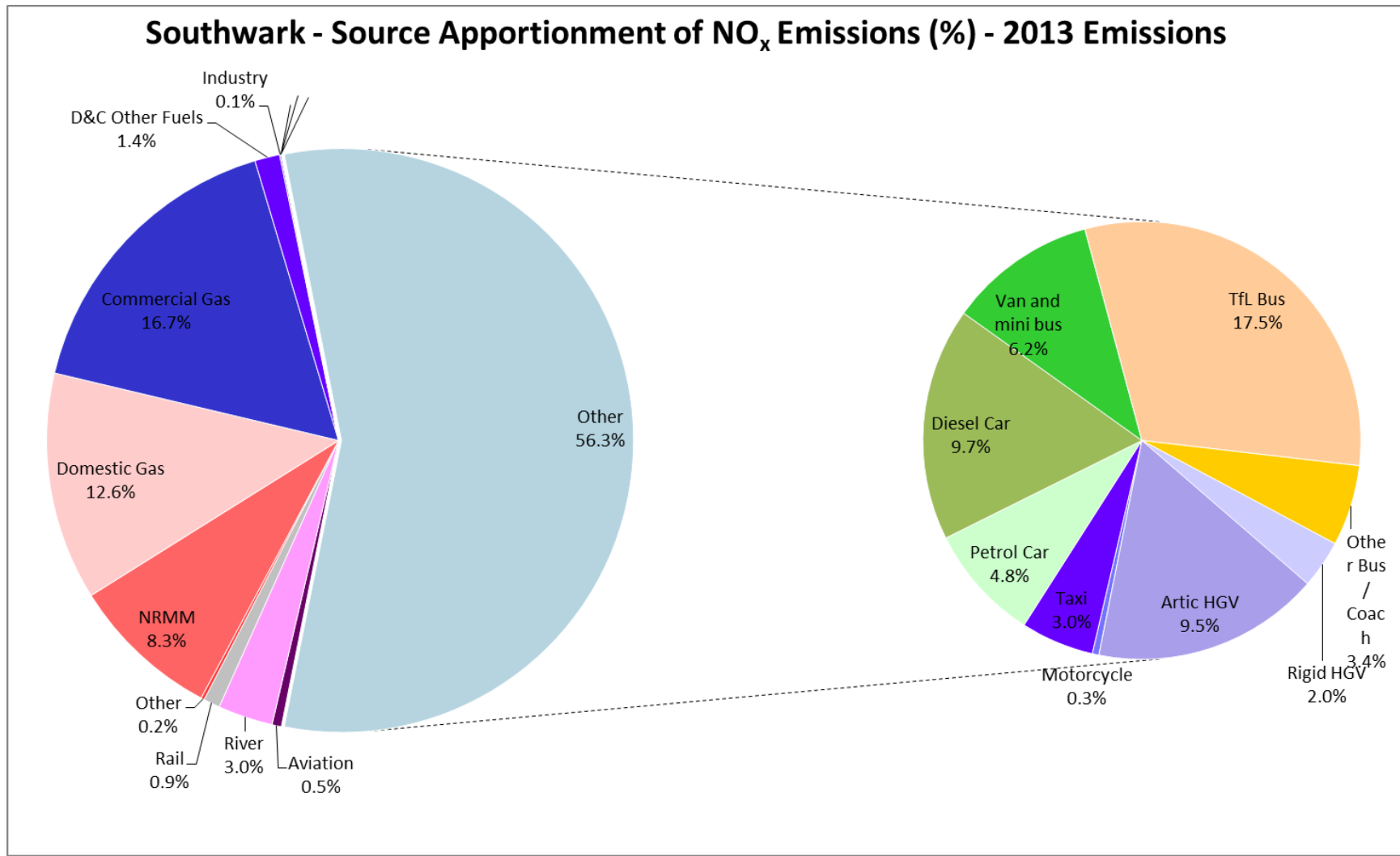


Figure 15 Southwark – Source Apportionment of NO₂ Emissions (%) - 2013 Emissions

Southwark - Source Apportionment of PM₁₀ Emissions (%) - 2013 Emissions

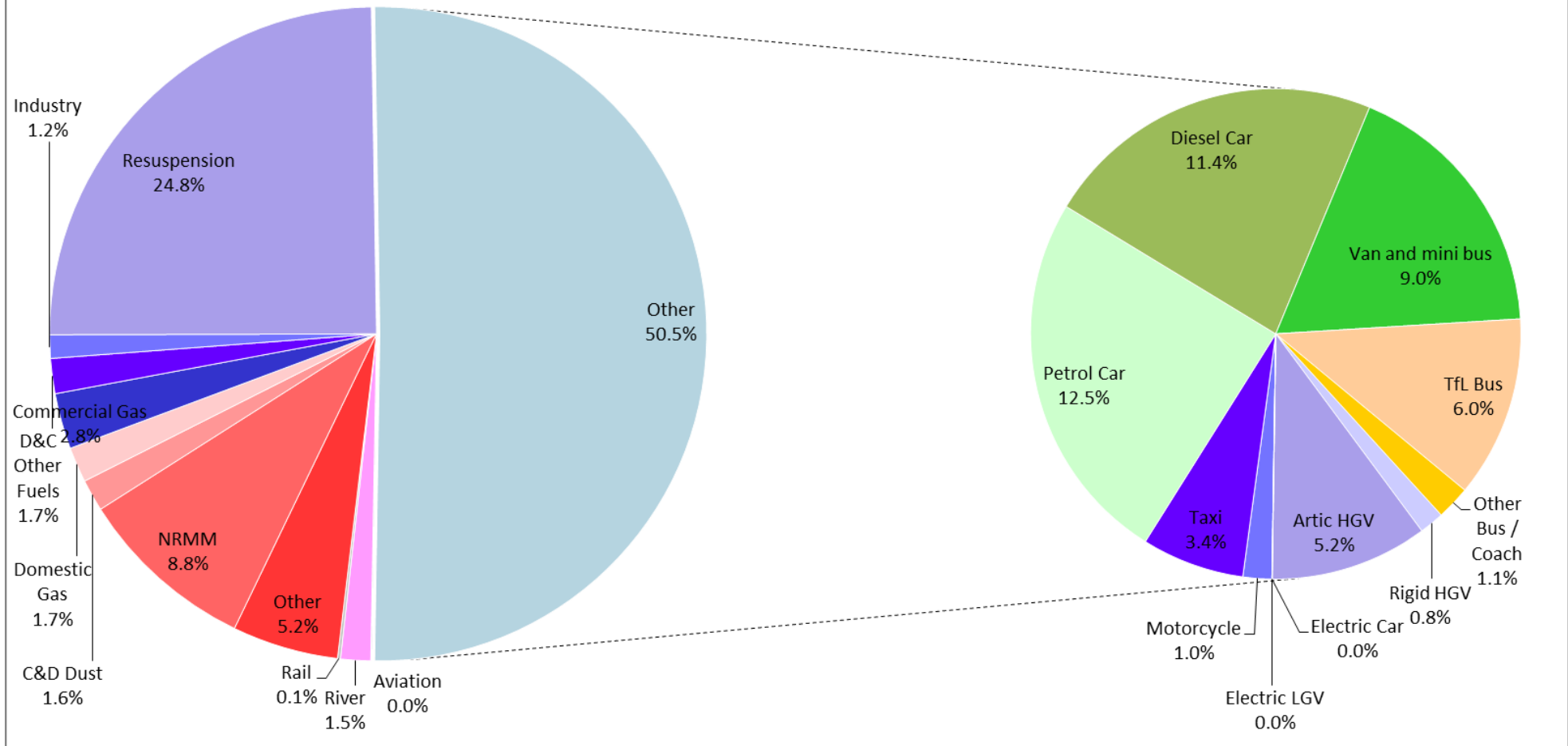


Figure 16 Southwark – Source Apportionment of PM₁₀ Emissions (%) - 2013 Emissions

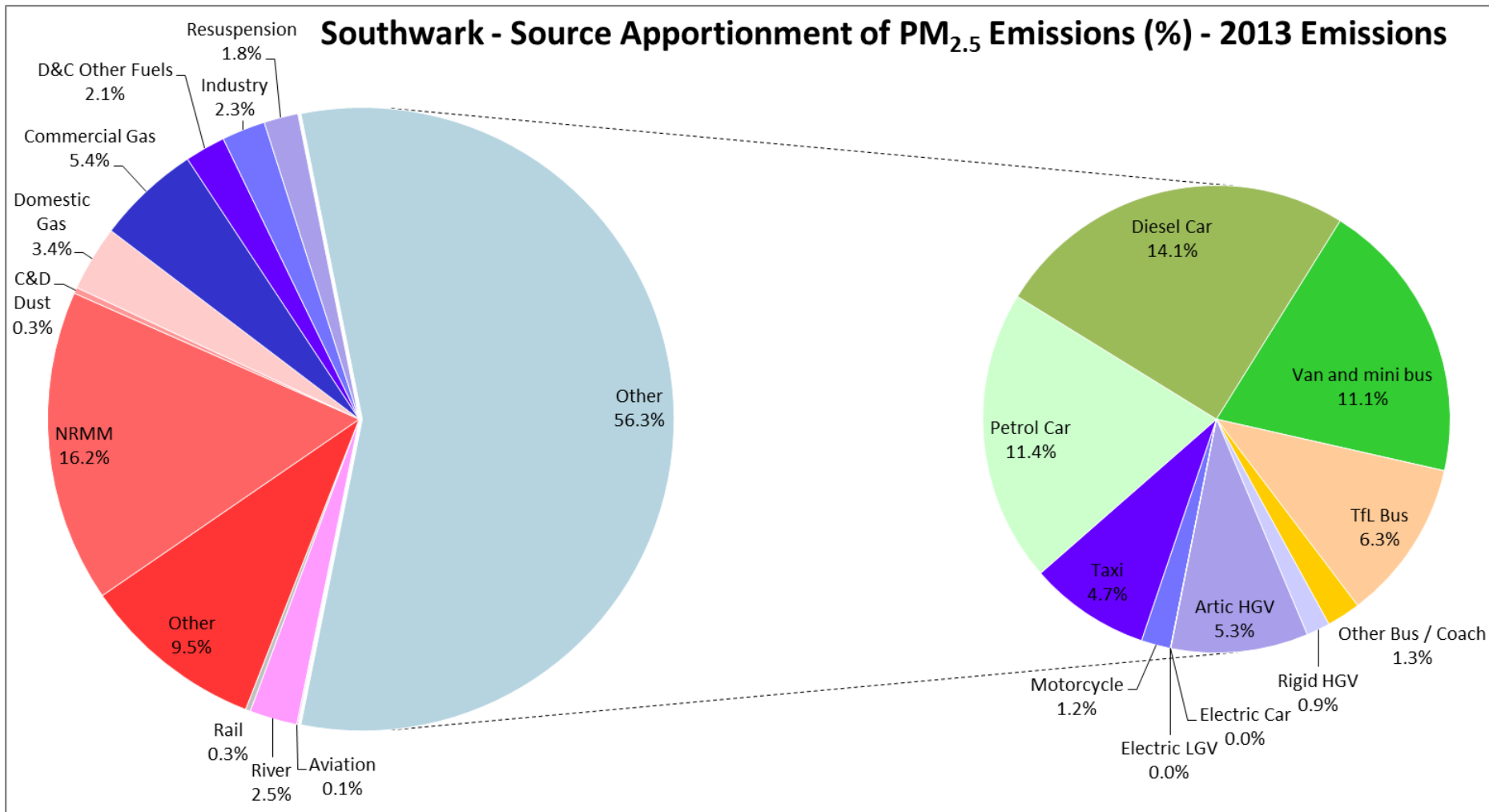


Figure 17 Southwark – Source Apportionment of PM_{2.5} Emissions (%) - 2013 Emissions

Appendix 5 - Glossary

AQAP	Air Quality Action Plan
AQMA	Air Quality Management Area
AQO	Air Quality Objective
BEB	Buildings Emission Benchmark
CAB	Cleaner Air Borough
CAZ	Central Activity Zone
GLA	Greater London Authority
LAEI	London Atmospheric Emissions Inventory
LAQM	Local Air Quality Management
LLAQM	London Local Air Quality Management
NRMM	Non-Road Mobile Machinery
PM ₁₀	Particulate matter less than 10 micron in diameter
PM _{2.5}	Particulate matter less than 2.5 micron in diameter
TEB	Transport Emissions Benchmark
TfL	Transport for London

Notes

